



Life Membership Application 2014-2015

A LIFE MEMBERSHIP is entered in the name of an individual and is in no instance transferable.

Club No.: _____ Date: _____
Club Name: _____

Please enroll as a Life Member:

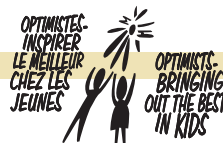
Name: _____ Member No.: _____
Address: _____
City: _____ State/Province: _____ Zip/Postal Code: _____

- Full payment enclosed (\$463.80 U.S. Funds or the Canadian dollar equivalent) (10 x annual dues)
- Down payment enclosed (minimum \$231.90 U.S. Funds or the Canadian dollar equivalent)
- Partially paid Life Member (Balance Due)
- Club check enclosed
- Personal check enclosed
- Club will pay balance
- Recipient will pay balance

If this subscription is to be treated confidentially, please indicate to whom all correspondence should be directed.

Name: _____
Address: _____
City: _____ State/Province: _____ Zip/Postal Code: _____
Telephone No.: (_____) _____

All payments, whether complete or partial, should be directed to Life Membership Department, Optimist International, 4494 Lindell Blvd., St. Louis, MO 63108.
In Canada, 5205, boul. Métropolitain Est, bureau 200 Montréal (Québec) Canada H1R 1Z7



Life Membership Application

At the International Convention in 1936, the enthusiasm of a few farsighted Optimists led to the development of one of the most prestigious and helpful programs in which any Optimist may engage...the Life Membership Plan. At its inception, the plan was designed to provide funding for the expansion of Optimist Club activity through development of new Clubs; while serving as an honor to those Optimists who either chose to purchase a Life Membership or for whom others wished to make the purchase out of respect, as recognition, and reward. Funding now supports numerous Optimist programs to better serve youth in the community.

Since, 1936, the program has grown until now there are over 21,000 Optimists who proudly claim Life Member status and each year approximately 150 new Life Membership go into effect.

When a Member becomes a Life Member, it is both an investment in the future of Optimism and an honor and privilege to the Life Member. The contribution to Optimist International growth and development is clear, for the Life Member Plan provides a substantial sum annually to the net monies available for financing growth programs (both New Club and growth within Clubs).

The privilege and honor to the Life Member is found in recognition as a contributing Life Member (quite often presented in recognition of service to one's Club) and an exemption from the portion of the Member's dues which is equal to what a Club pays per Member in International dues.

Any Optimist may become a Life Member, either by self-enrollment or by enrollment as a gift from a Club, District, friend, or relative.

The form on the reverse may be used to enroll an Optimist as a Life Member or to begin the process by filing the application and minimum down payment as described. Questions relating to Life Membership may be directed to the International Office.

By becoming a Life Member an Optimist demonstrates faith in Optimist International by prepaying a portion of his Optimist Club dues. A subscription for Life Membership is \$463.80 US or the Canadian dollar equivalent payable in full at the time of application or with a \$231.90 US or the Canadian dollar equivalent down payment, the balance to be paid within two years. **A LIFE MEMBERSHIP** is entered in the name of an individual and is in no instance transferable.

Upon completion of full payment of the subscription of \$463.80 US or the Canadian dollar equivalent the subscriber becomes a Life Member and is presented with a gold embossed Life Membership card and certificate. The Member is then privileged to deduct \$36.37 US or the Canadian dollar equivalent from the Optimist Club's annual dues, and the Club is privileged to deduct \$36.37 US or the Canadian dollar equivalent from the annual dues paid to Optimist International. Any Optimist in good standing may subscribe to a Life Membership; a Club or District may purchase a Life Membership as an award for an individual Optimist; or a Life Membership may be purchased for an Optimist by a spouse or family as a gift.

The Life Member, and **NOT** the Club, is responsible for assignment of Life Member credit when a Life Member belongs to more than one Club at a time or changes his/her Club affiliation.

